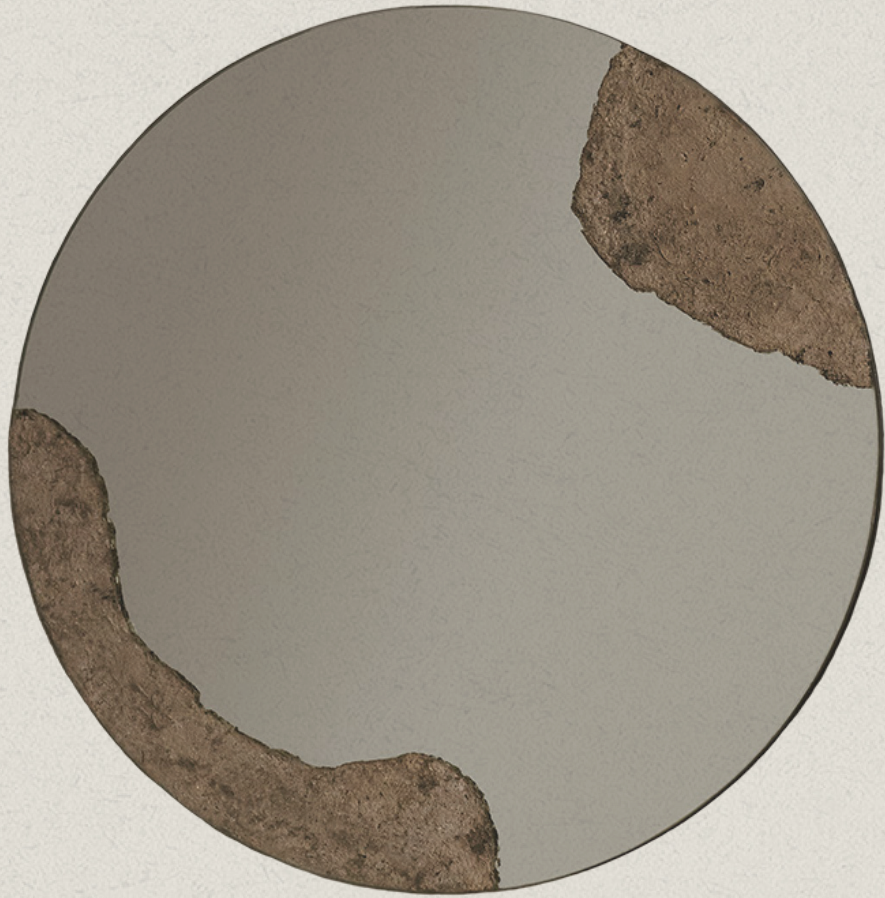


DOM LO

STUDIOS





POMPEII ROUND MIRROR

LIST \$2,150

POMPEII SQUARE MIRROR

TYPE: WALL MIRROR

DIMENSIONS

24" W x 1" D x 24" H

MATERIALS

Black Satin Lacquer, Tan Burnt Ash, Clear Mirror

LEAD-TIME

6-12 Weeks

BEAUTY IN DETERIORATION

MINIMALISM

The Pompeii Round Mirror consists of burnt ash that is hand-spread and worked. The inspiration for this mirror comes from what remains of the city of Pompeii today. We were fascinated with how what was found unlocked numerous windows to the history of our past and how this ancient empire once lived.

The mirror acts as a window and a reflection to our past and the burnt ash gives a textural feeling to this part of history.

NOTE: Burnt Ash shape and color is organic and may differ from piece to piece to keep uniqueness in the artists own hand and technique.

CUSTOMIZATIONS

IDENTITY

ASH COLOR

Tan

MIRROR

See Tearsheet for Finishes

LACQUER COLOR

BM Paint code

FINISHES

FRAME FINISHES

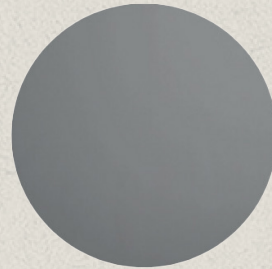


BLACK
SATIN LACQUER

MIRROR FINISHES



BRONZE



SMOKE



CLEAR

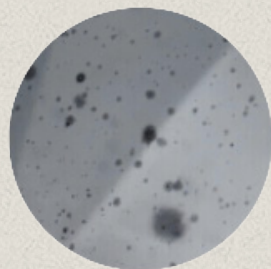
ASH COLORS



TAN ASH

SPECIALTY MIRROR FINISHES

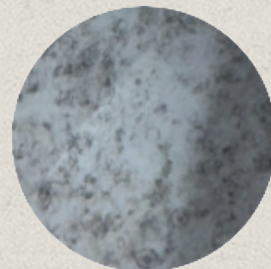
*Specialty finishes are considered custom and will have a custom fee associated



PIT



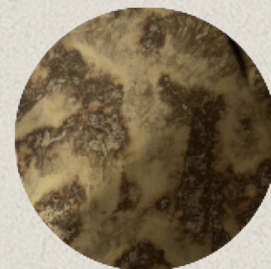
STORM



CLASSIC



HEAVY



HEAVY GOLD