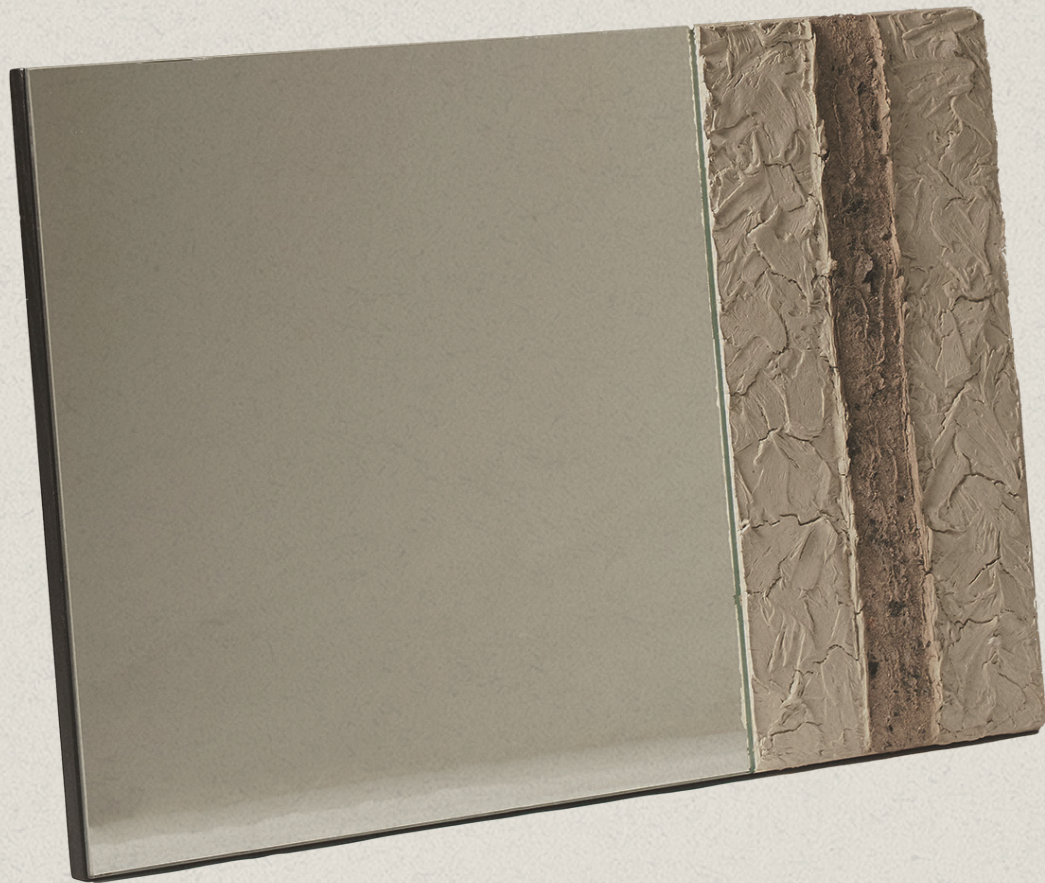


# DOM LO

STUDIOS





# POMPEII II MIRROR

LIST \$2,600

## POMPEII II MIRROR

TYPE: WALL MIRROR

### DIMENSIONS

30" W x 1" D x 20" H

### MATERIALS

Black Satin Lacquer, Beige Plaster, Tan Burnt Ash,

Clear Mirror

### LEAD-TIME

6-12 Weeks

## BEAUTY IN MIXED DETERIORATION

MINIMALISM

The Pompeii Mirrors are part of an on-going series inspired by the ancient city of Pompeii. By mixing medias such-as burnt ash and plaster that reference the casts that were made of the citizens living through the eruption of Mount Vesuvius.

The Pompeii II Mirror consists of hand sculpted plaster and burnt ash that is hand-spread and worked.

NOTE: Burnt Ash shape and color is organic and may differ from piece to piece to keep uniqueness in the artists own hand and technique.

## CUSTOMIZATIONS

IDENTITY

ASH COLOR

Tan

PLASTER COLOR

BM Paint Code

MIRROR

See Tearsheet for Finishes

LACQUER COLOR

BM Paint Code

# FINISHES

## FRAME FINISHES



BLACK  
SATIN LACQUER



CUSTOM COLOR  
PLASTER



DOM LO  
PLASTER

## MIRROR FINISHES



BRONZE



SMOKE



CLEAR

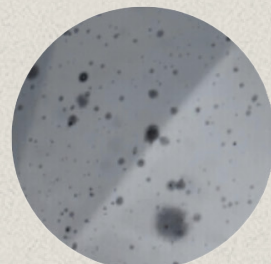
## ASH COLORS



TAN ASH

## SPECIALTY MIRROR FINISHES

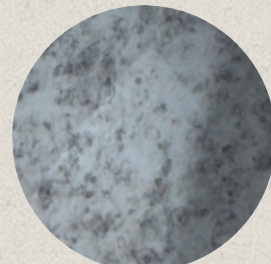
\*Specialty finishes are considered custom and will have a custom fee associated



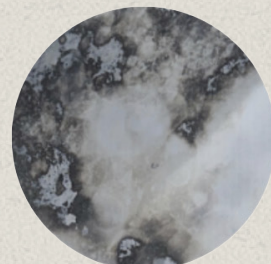
PIT



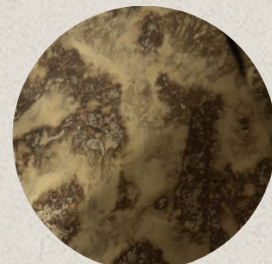
STORM



CLASSIC



HEAVY



HEAVY GOLD